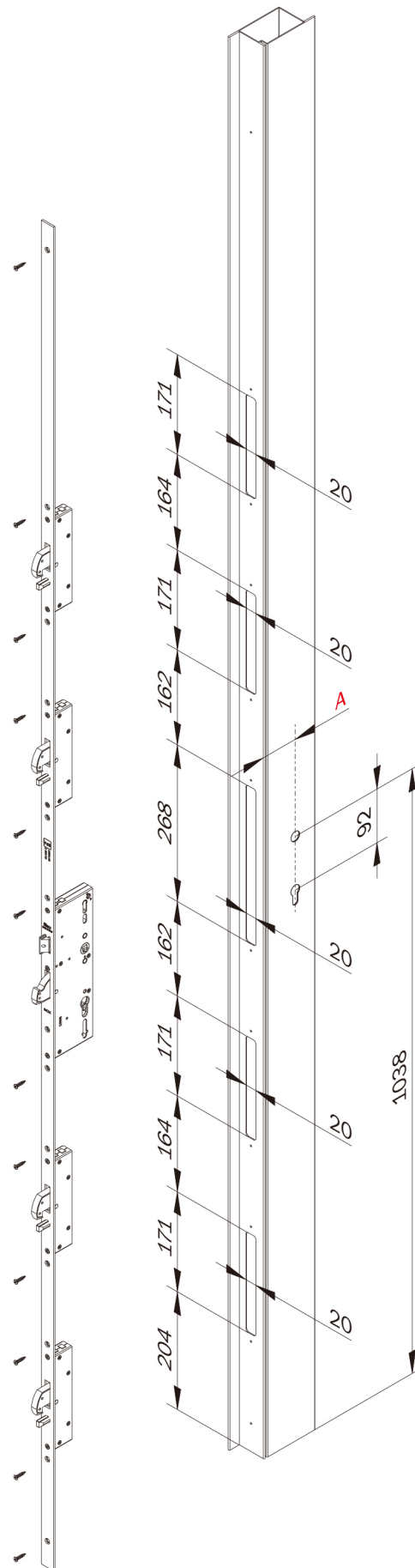
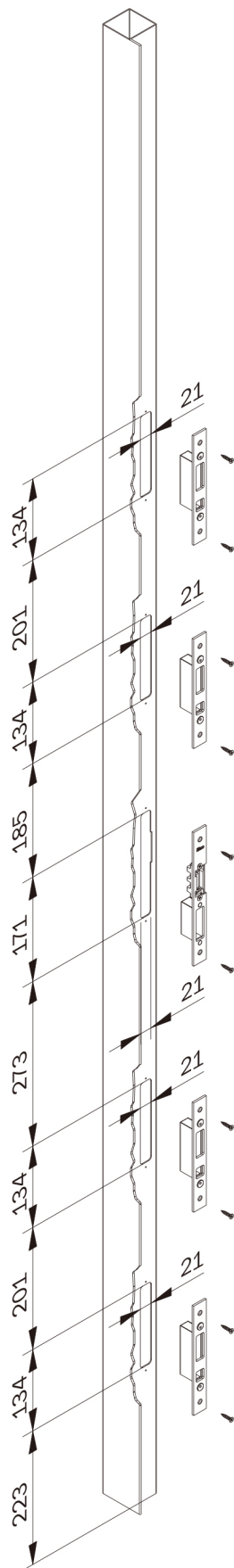
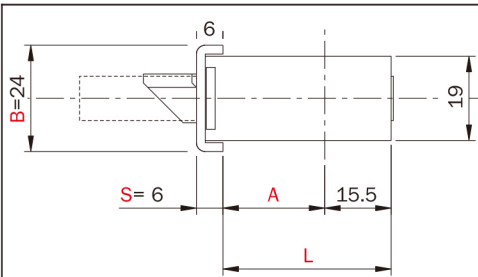


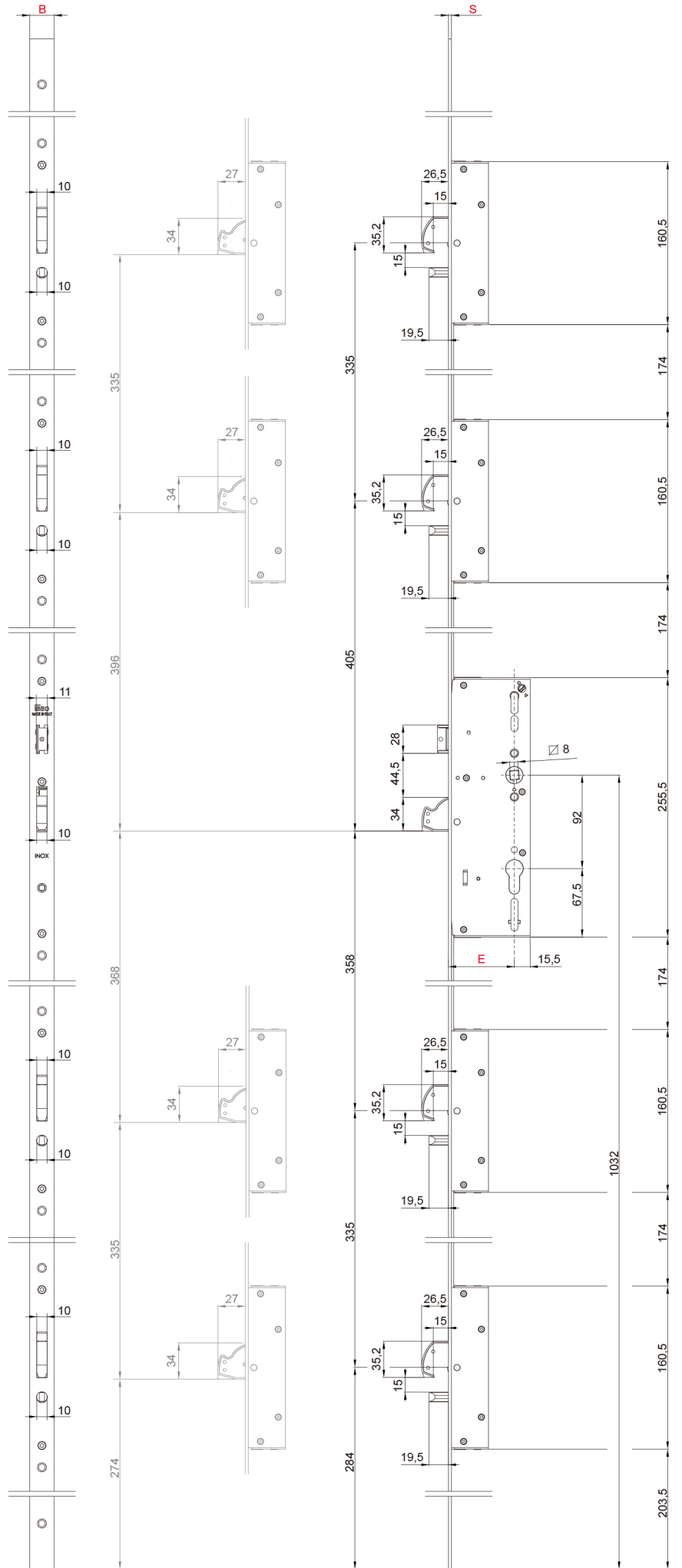
Multiblindo classic 5 punti

Istruzioni di montaggio
Assembling instructions
Instructions de montage
Montageanleitung
Instrucciones para el montaje





E	A	L
25	18	33,5
30	23	38,5
35	28	43,5
40	33	48,5
65	58	73,5


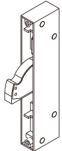
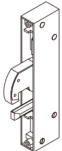
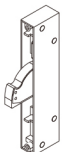




prEN 15685:2009

A	3	X	8	A	0	G	7	3	1
B	3	X	8	A	0	G	7	0	1

CLASSIFICAZIONE CON FRONTALE SUPPORTATO
 CLASSIFICATION WITH SUPPORTED FOREND PLATE
 CLASSIFICATION AVEC TÊTIÈRE
 KLASSIFIZIERUNG MIT ABGESTÜTZTEM STULP
 CLASIFICACIÓN CON FRENTE SOPORTADO

Sicurezza per i beni per i punti di chiusura <i>Security for locking points</i> Sécurité des points de fermeture <i>Sicherheit für Schließpunkte</i> Seguridad para puntos de cierre	Sicurezza per i beni per i punti di chiusura anti separazione <i>Security for anti separation points</i> Sécurité des points anti-séparation <i>Sicherheit für Einbruchschutzpunkte</i> Seguridad para puntos antiseparación
7	A  3
	B  0
7	0
7	A  3
	B  0

